

An aerial photograph of a large dam and reservoir situated in a deep, rugged canyon. The canyon walls are composed of layered, reddish-brown rock. The reservoir is a deep blue color, and the dam is a long, curved structure across the river. The sky is a clear, pale blue.

Salt River Project's Integrated System Plan

ESIG 2024 Fall Technical Workshop

October 23, 2024



Delivering water and power®

ABOUT SRP

SRP is a community-based not-for-profit providing water and power to 1.1 million customers in the Phoenix metro area.



**Top
3**

**IN THE U.S. FOR
RELIABILITY,
AMONG POWER
UTILITIES
SERVING 1-2M
CUSTOMERS
(2022 SAIDI)**

#1

**RESIDENTIAL
CUSTOMER
SATISFACTION AMONG
LARGE WESTERN
UTILITIES
(J.D. POWER 2023)**

#1

**BUSINESS CUSTOMER
SATISFACTION
AMONG LARGE
WESTERN UTILITIES
(J.D. POWER 2023)**



**PHOENIX WAS AMERICA'S
HOTTEST MAJOR CITY IN 2023 & 2024**

ABOUT THE VALLEY

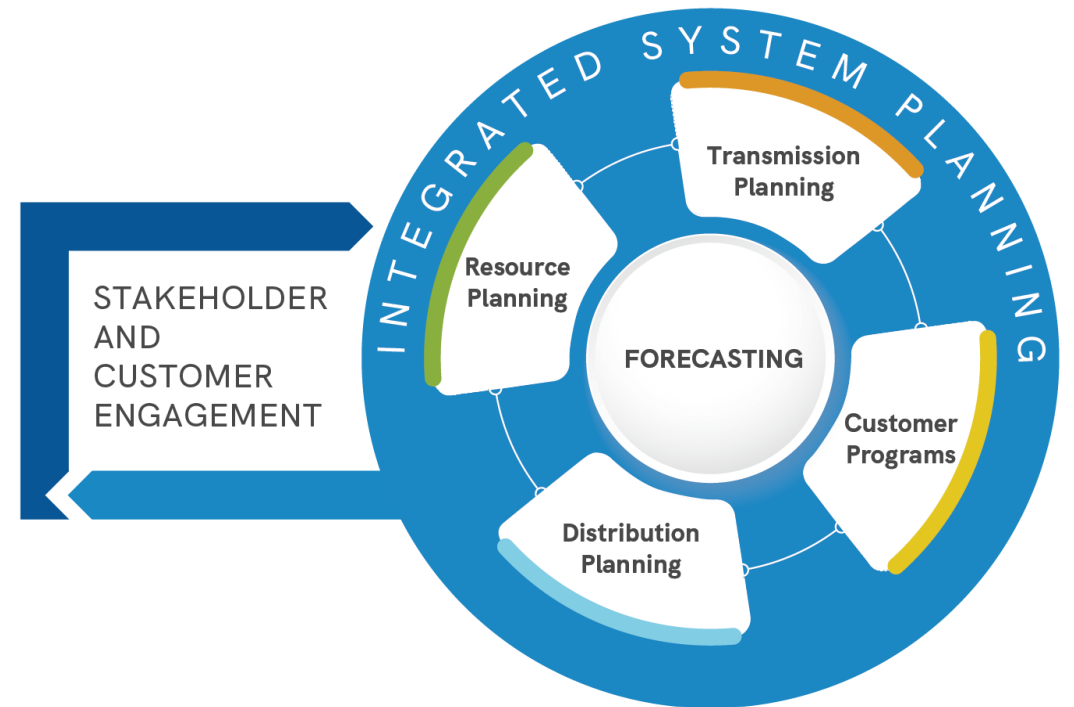
- Population Growth:
 - 11.2% population growth between 2010 and 2020
 - 25% projected growth in SRP service area by 2030
- Temperatures in 2023-2024:
 - 61 days at 110 degrees or higher
 - 131+ days at 100 degrees or higher
 - 117 degrees September 28th
- Affordability comprises 3 of the 5 biggest issues facing the state

SRP's ISP – What is it and why do we need it?

Planning a future system (2025-2035) that will enable us to achieve or exceed our 2035 goals, at the best customer value.

The first Integrated System Plan identifies:

- Viable pathways for achieving SRP's 2035 Corporate Goals
- Costs, risks and tradeoffs of different strategic approaches
- System solutions that are valuable across different future scenarios
- New capabilities and tools needed to plan as the system evolves



ISP Project Team

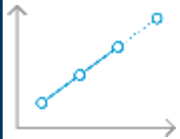


Key Contributing Departments

Integrated System Planning & Support



Forecasting & Load Research



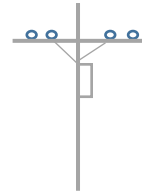
Resource Planning & Development



Transmission Planning, Strategy & Develop



Distribution Planning & Strategy



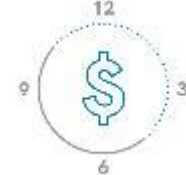
Customer Programs



Financial Planning & Analysis



Pricing



Strategic Research & Insights



Coordination, Leadership Guidance, Analysis & Support

Leadership Guidance & Analysis Teams

Customer Research Team

Consultants:



System-Wide Analysis

Strategic Approaches

Scenarios

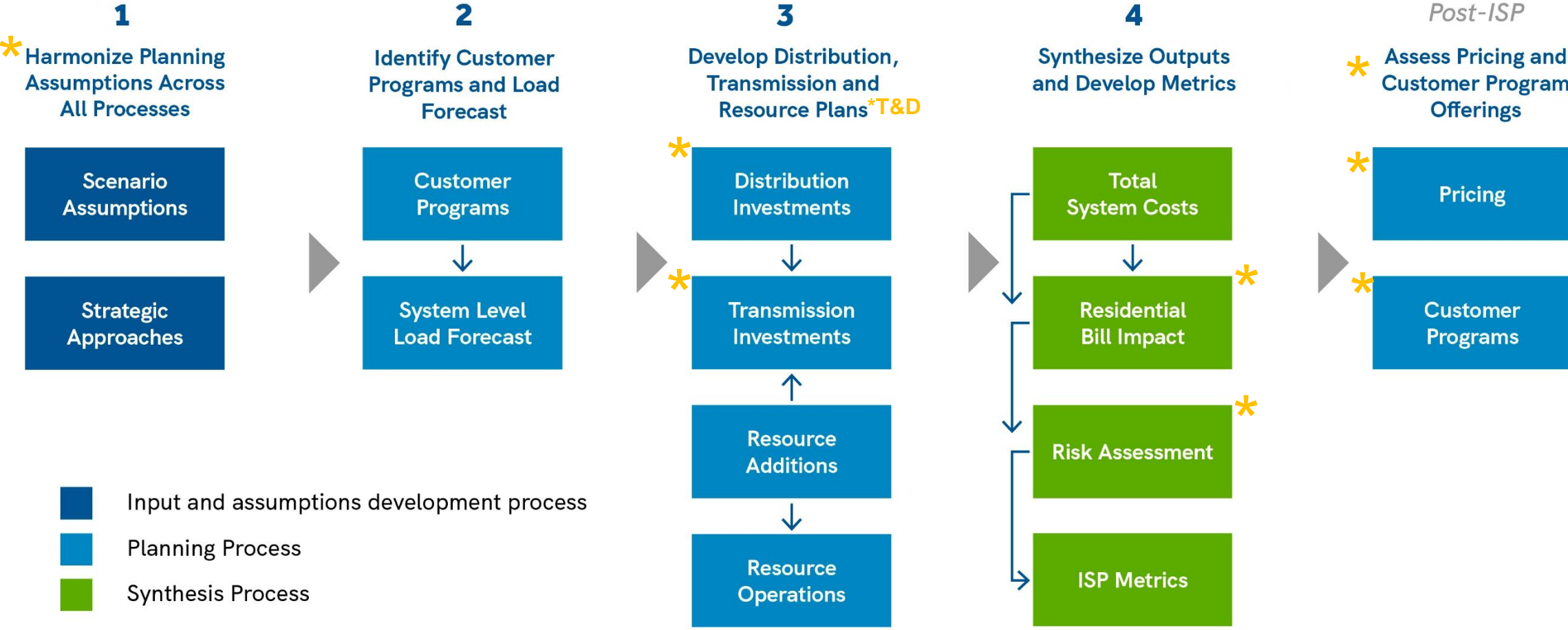
	Technology Neutral	No New Fossil	Min. Coal
Desert Contraction	●	●	●
Current Trends	●	●	●
Strong Climate Policy	●	●	●
Desert Boom	●	●	●

12 Scenario-Based System Plans



30 Sensitivity Cases

Modeling / Analytical Framework



ISP Results: System Investments Needed at a Rapid Pace

- SRP will need to **double** if not **triple** resource capacity in the **next decade** to serve customers while achieving reliability and sustainability goals. This is an unprecedented pace.

ISP Results: System Investments Needed at a Rapid Pace

- SRP will need to **double** if not **triple** resource capacity in the **next decade** to serve customers while achieving reliability and sustainability goals. This is an unprecedented pace.
- New renewables **combined with** firm generation capacity are part of a least-cost portfolio, even under a wide range of gas price and technology cost sensitivities.

ISP Results: System Investments Needed at a Rapid Pace

- SRP will need to **double** if not **triple** resource capacity in the **next decade** to serve customers while achieving reliability and sustainability goals. This is an unprecedented pace.
- New renewables **combined with** firm generation capacity are part of a least-cost portfolio, even under a wide range of gas price and technology cost sensitivities.
- **Without new firm generation capacity, the system cannot satisfy reliability requirements under a high load growth scenario.**

ISP Results: System Investments Needed at a Rapid Pace

- SRP will need to **double** if not **triple** resource capacity in the **next decade** to serve customers while achieving reliability and sustainability goals. This is an unprecedented pace.
- New renewables **combined with** firm generation capacity are part of a least-cost portfolio, even under a wide range of gas price and technology cost sensitivities.
- Without **new firm generation capacity**, the system cannot satisfy reliability requirements under a high load growth scenario.
- **Hundreds of miles** of new or upgraded transmission lines and nearly double the number of 500/230 kV transformers could be needed relative to today. Location matters.

ISP Results: System Investments Needed at a Rapid Pace

- SRP will need to **double** if not **triple** resource capacity in the **next decade** to serve customers while achieving reliability and sustainability goals. This is an unprecedented pace.
- New renewables **combined with** firm generation capacity are part of a least-cost portfolio, even under a wide range of gas price and technology cost sensitivities.
- Without **new firm generation capacity**, the system cannot satisfy reliability requirements under a high load growth scenario.
- **Hundreds of miles** of new or upgraded transmission lines and nearly double the number of 500/230 kV transformers could be needed relative to today. Location matters.
- SRP will need to **evolve programs and price plans** to shift consumer behavior and to further educate customers on when to consume and when to conserve energy.

Integrated System Plan: System Strategies

Energy Investments

Invest in renewable resources and storage to manage fuel consumption and drive carbon and water reductions.

Capacity Investments

Invest in firm generation, including natural gas, to support reliability and manage affordability, while also supporting advancement of emerging firm technologies.

Proactive Transmission

Proactively plan to expand transmission infrastructure to enable generator interconnections and load growth.

Distribution Innovation

Ensure distribution grid readiness to maintain reliability and enable customer innovations to drive carbon reductions.



Strategic Investment & Reinforcement of Existing Assets

Reinforce and maximize value of existing infrastructure with strategic investments to manage affordability and ensure future performance, grid security and resilience.

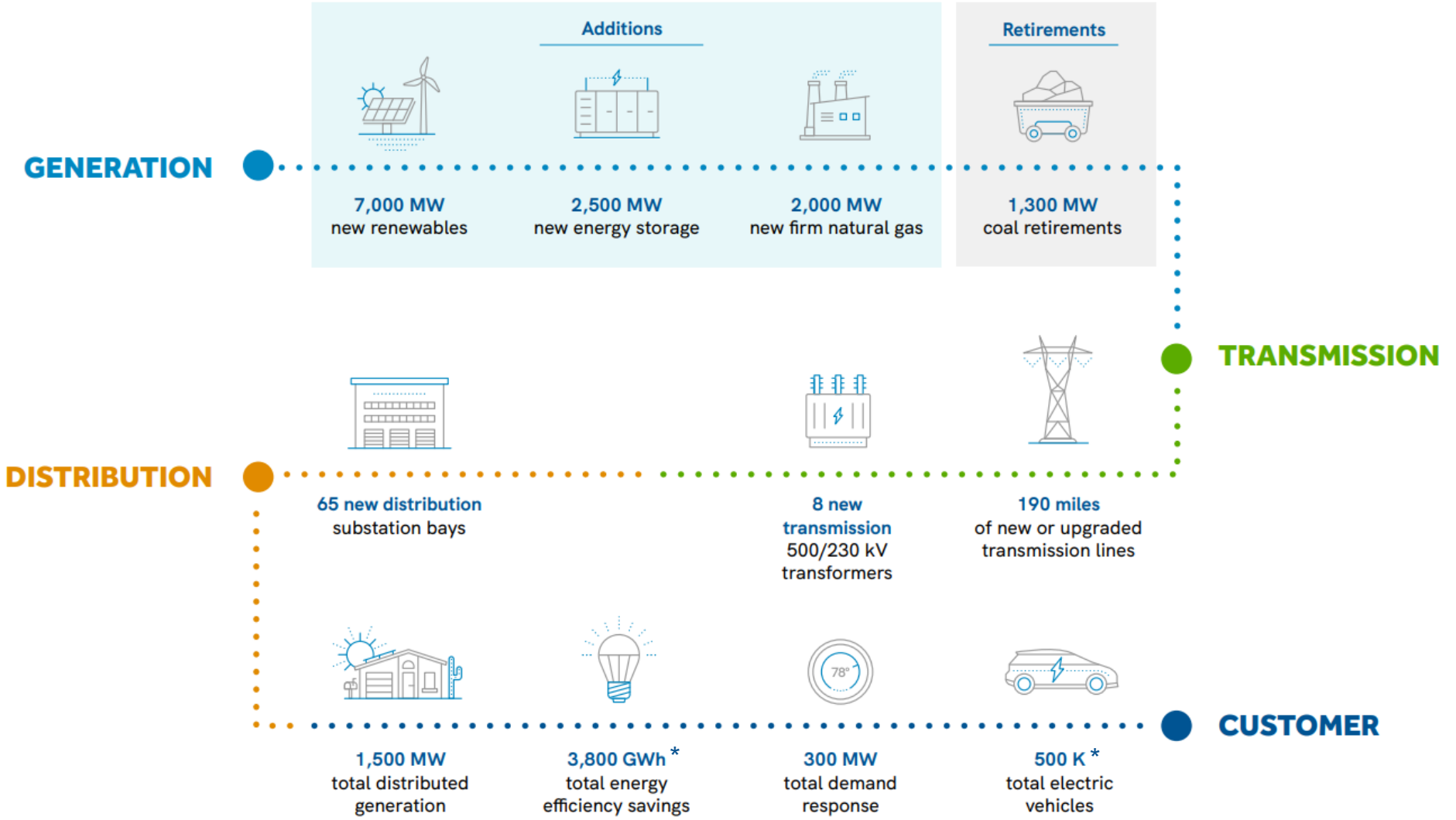
Evolution of Customer Programs & Pricing

Evolve pricing and customer programs to improve economy-wide carbon reductions and pace infrastructure development, while recognizing customers' diverse needs.

Partnerships & Suppliers

Explore partnerships, supply chain and development solutions that manage cost and availability to meet the pace of transformation.

Balanced System Plan (2035)



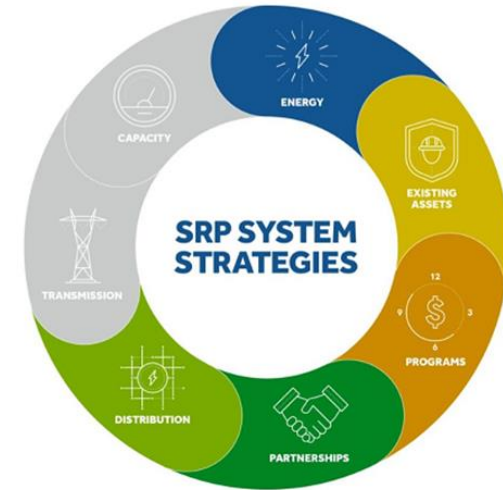
Post ISP: A Year of Integrated Action

Customer Grid Focused Actions

1. Residential Time-of-Use Pilot
2. Time-of-Use Evolution
3. Customer Program Refresh
4. EV Managed Charging Roadmap
5. Electrification
6. Distribution Enablement Roadmap

Bulk Grid Focused Actions

7. Resource Request for Proposals/Information
8. Coal Transition Plan
9. Proactive Siting
10. Regional Transmission



thank you!